

'WHERE TOP COMMERCIAL REAL ESTATE PROFESSIONALS COME TOGETHER!'

The New Jersey Commercial Property Information Exchange (NJCPIX) is an active Commercial Real Estate trade organization dedicated to the professional growth and success of its members who are Commercial specialists in the New York metropolitan area. The NJCPIX is focused on providing its members top quality professional education and a forum for cooperation and increased business opportunities including full access our state of the art Commercial Information Exchange. NJCPIX members enjoy a wide variety of products and services designed to benefit them, their clients, their bottom line and their industry including:

NJCPIX MEMBER BENEFITS

Full access to the New Jersey Commercial Properties Exchange at www.NJCPIX.com

Continuing Education

Top Quality NJ Real Estate Commission Approved Continuing Education with a Commercial Focus

Special Commercial Business Forums & Networking Events

Networking with top area commercial practitioners and service providers

Join the New Jersey Commercial Property Information Exchange Today

MEMBER APPLICATIONS ARE AVAILABLE AT www.NJCPIX.com

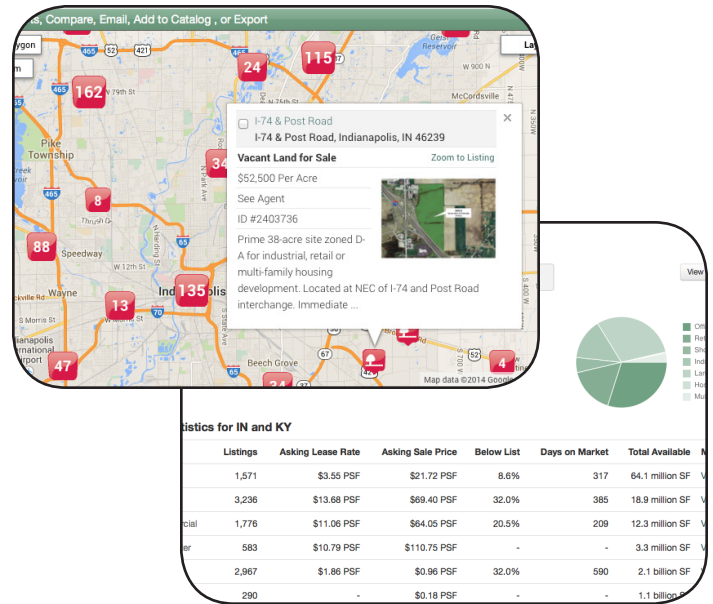
To qualify for membership in the NJCPIX, you must be a licensed real estate practitioner and have the permission of your broker to submit your commercial listings to NJCPIX.

Join for the Data

1

NJCPIX members have access to more data

- Full-Access users have access to nation-wide listing data, including inventory imports from national brokerages and more than 30 local associations.
- Data includes commercial property listings, recent sale/lease comparables, tax records, demographics, market statistics, and more.
- Data is input by local members with local oversight—and in many cases also locally verified—making it the most accurate and comprehensive data available.



2

Join for the Exposure

You never know where your next deal will come from

- NJCPIX member listings are viewable by all visitors to NJCPIX.com.
- Full-access members have the option to disseminate their property listings to a partner network of CIEs, listing services, economic development sites, media publications, and online classifieds.
- CIE membership allows you to stay in touch with others in your market and stay aware of local trends and events.

Join for the Tools

3

NJCPIX is an advanced marketing toolbox

- Create a website or online profile for you and your company; broadcast your property listings to dozens of sites; generate flyers, brochures, and proposals; access real-time data from mobile devices; create listings widget for use in websites/blogs; generate QR codes for your company or personal profile; and more!



Contact Us Today to Learn More about the Benefits of Joining NJCPIX!

(973) 425-0110 or gary@NCJAR.com

Grow Your Real Estate Business with NJCPIX



Benefits of Joining

Increased Efficiency

- Save time and money with a single online source for all commercial real estate in the marketplace
- Maximize listing exposure on 50+ websites without redundant entry
- Connect directly with others via broadcast email
- Stay on top of local news, events and educational opportunities that will take your business to the next level
- Retain ownership of your data and control who has access
- Access listings through the mobile app

Superior Searches & Data Integrity

- Quickly locate properties and comps using the industry-leading scenario search with real-time filters
- Easily navigate between search results, map and property details view
- Rely on data that is broker driven, timely, and accurate (listings must be updated every 30 days)

NJCPIX.com is a Commercial Information Exchange (CIE).

A Commercial Information Exchange is like a Multiple Listing Service built specifically for Commercial Real Estate.

It's an online database of all the information and tools a CRE professional needs to be successful.

A CIE is operated by brokers for brokers. Unlike other services, the local members are the gatekeepers and determine participation requirements and fees.

A CIE enables a local community of brokers, developers, appraisers, and investors to share information and work together more efficiently. It removes barriers, allowing big companies and small companies alike to focus their time and money on serving their clients.

Advanced Marketing

- Prepare comprehensive, consistent marketing materials for presentations and property tours
- Market your expertise and experience with a professional profile
- Analyze market conditions and opportunities with integrated demographics and local market statistics
- Export listing data into three common file formats for ultimate portability

Real Time Market Tracking

- Identify and export qualified leads for follow-up
- Generate client reports displaying online market activity
- Receive automatic market updates on properties, news, and events tailored to your preferences

To learn more, visit www.NJCPIX.com or contact Gary Large at (973) 425-0110.

Features

Stay Connected with the CIE Mobile App

The Mobile App (<http://mobilecie.com>) is designed to keep Catylist CIE members connected while on the go. It works on Android/iOS smartphones and tablets, including iPhones/iPads. The setup is quick and easy.

- Sophisticated, map-based searching including unlimited results.
- View full listing details, including photo galleries.
- Synced with listing for access during showings/client presentations.
- Access to the member directory to call/email colleagues.
- Read the latest commercial real estate news aggregated from around the Web.
- Email listings and catalogs directly from your device.
- Free public search allows tenants & investors to find property availabilities.



Enter Listings Once and Market Across the Web

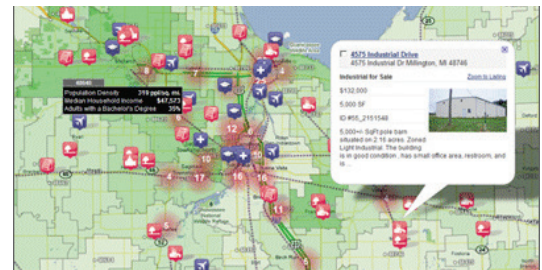
Enter your properties into your CIE and automatically export them to Catylist's exclusive distribution network including 30+ CIEs located throughout the country, partner listing services, search engines, and online classifieds. It's the quickest and easiest way to maximize exposure for your listings.

Members can also send clients a listing traffic report from the various websites and search engines.



Integrate GIS Data Layers with Search Results

Catylist's CIEs are a fully capable GIS platform. Members can add various data layers on top of property listing and transaction search results. Current layers include demographic data (Population Density, Household Income, and Education Level) as well as traffic flow indicators for major streets and highways.



Give Clients Instant Access via QR Codes

A QR code is a barcode that can be scanned by smartphones. All printable reports generated from your local CIE can include QR codes for listings or professional profiles. Clients can simply scan the code and automatically view the online details via their smartphone.

